

Generation and Access to Geological Information In the Mexican Geological Survey

www.gob.mx/sgm

Natalia Amezcua

Key Messages

- Geological information plays an important role and has economic and scientific value; preservation of legacy data and new data are essential and critical.
- Geological information accessible to public, and fully transparent.
- Find the ways and mechanisms to make information public, by overcoming the challenges, innovating and using available technology.
- Accessibility throughout digital online platforms, is low cost, time effective and interactive.
- Publically available geological information sensitizes society and governments, it contributes to improve decision-making processes, it is basic to address national challenges and to establish public policies.

The Mexican Geological Survey

- Established based on Art. 9 of the Mexican Mining Law.
- More than 75 years generating and providing geological information.
- We are a federal institution engaged in generating and providing geological information, promoting its application to support investment and increase competitiveness of the extractive sector, through a sustainable use of natural resources, contributing to the national development.



Thematic areas

- Geology and geological mapping
- Geochemistry
- Geophysics
- Geohydrology
- Environmental geology
- Remote sensing
- Geological hazards and risk assessment
- Research in geosciences
- Mineral resources prospecting, assessment and evaluation
- Energy minerals
- Laboratory services
- Institutional Databank
- GeoInfoMex



Generation of geological information

Data acquisition and processing

Aerially collected and remote sensing



Magnetometry, TEM,
Radiometry, Hyperspectral

- Technology
- Innovation
- Collaboration

Laboratory

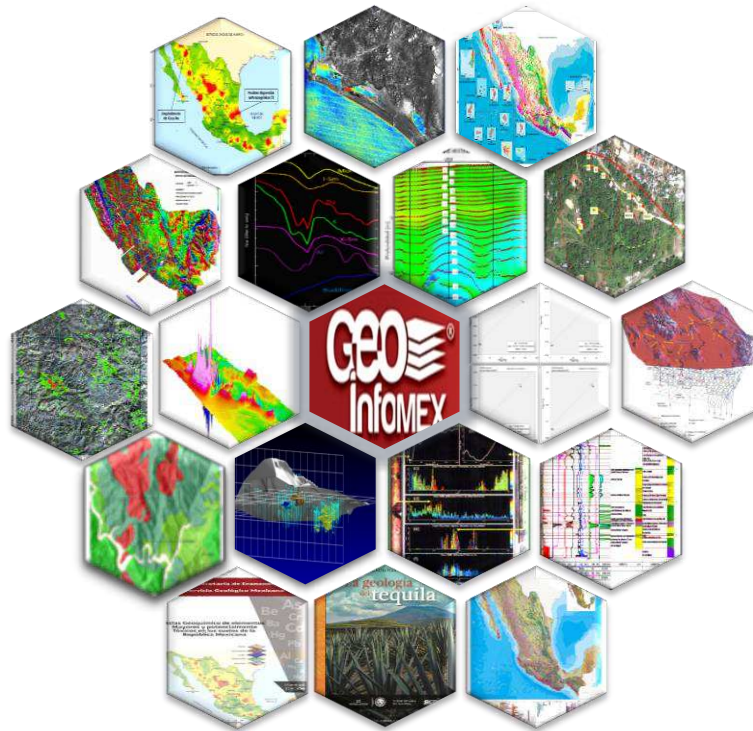


At site



Generation of geological information

Data processing, interpretation, serving, and preservation



Access to geological information

GeoInfoMex a Geological Information platform

<https://www.sgm.gob.mx/GeoInfoMexGobMx/>

GEO
InfOMEX

Geology

Geochemistry

Geophysics

Mineral Deposits

Satellite Imagery

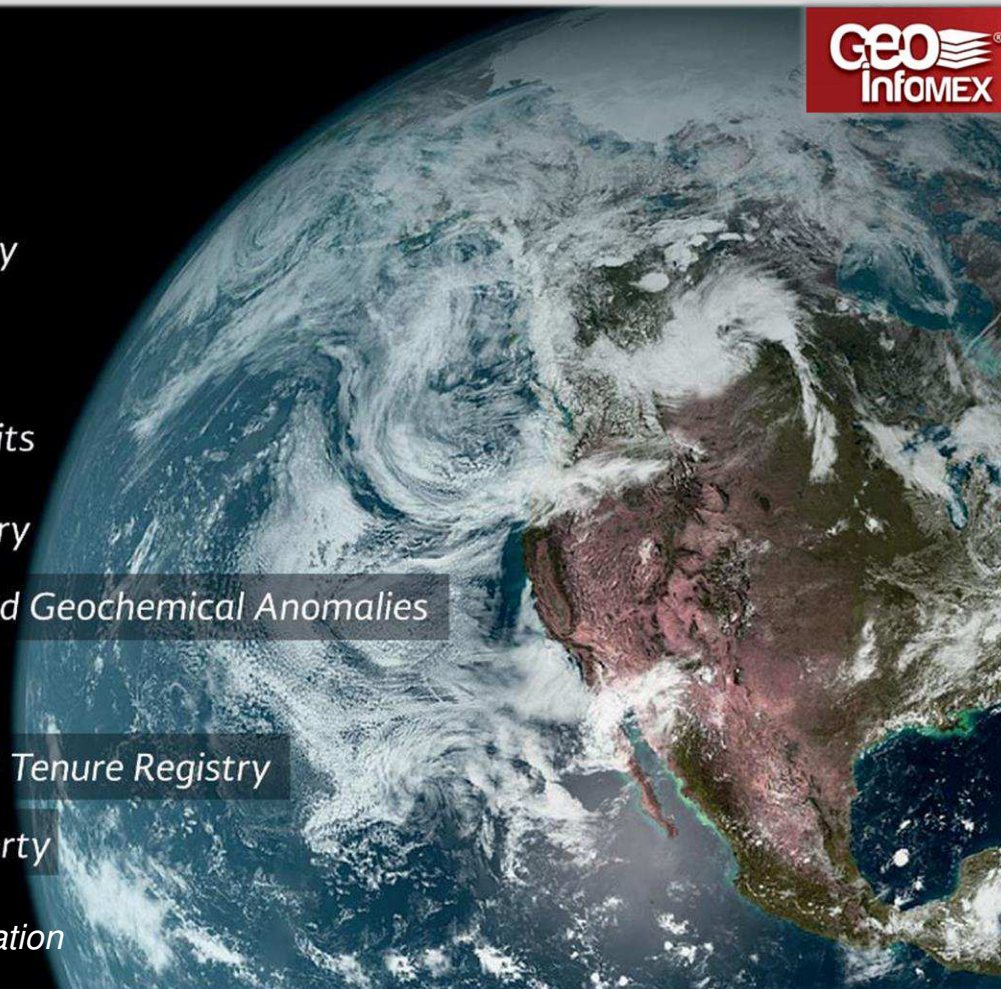
Geophysical and Geochemical Anomalies

3D Landscape

National Land Tenure Registry

Mining Property

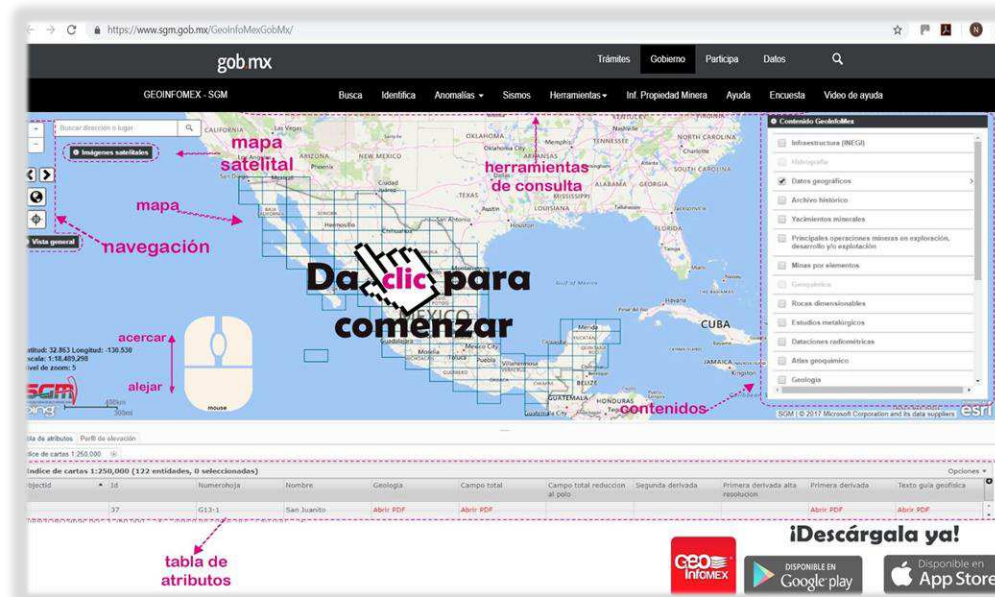
90 levels of earth sciences information



Access to geological information: Online resources

<https://www.sgm.gob.mx/GeoInfoMexGobMx/>

Combination of new and existing earth sciences data and information, served in a geographical information platform, with 90 information layers, with descriptive attributes, visualization windows, and downloading options, an easy and mobile tool allowing the user to access technical data.



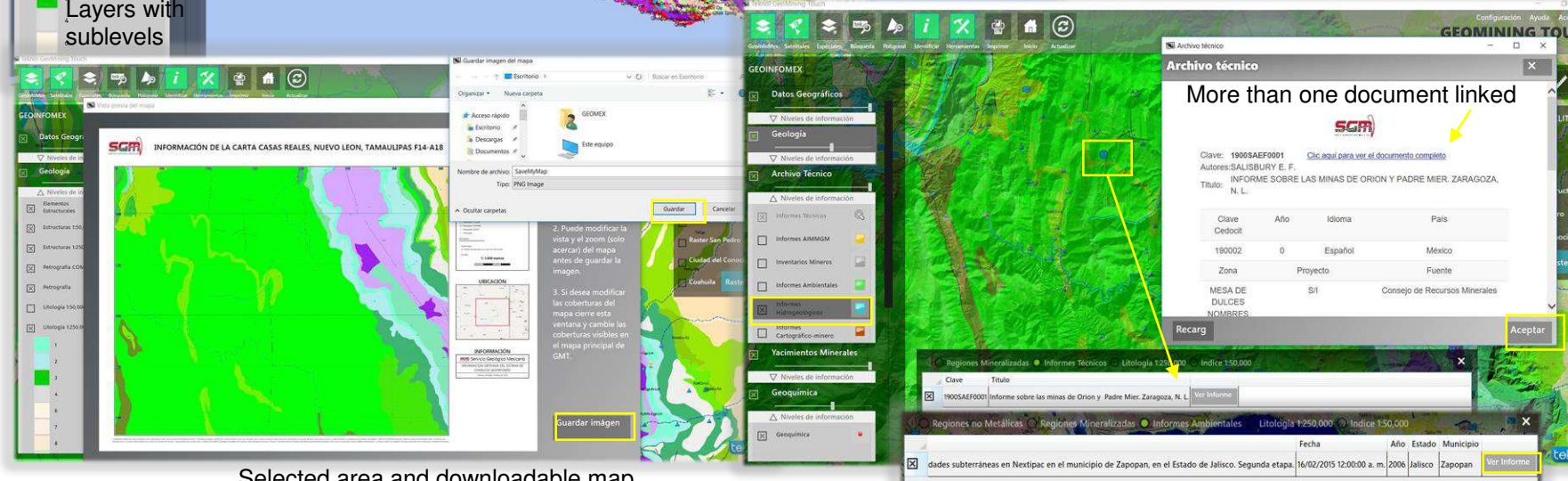
Legacy data, heritage data and new data throughout an interactive web platform.

GeoInfoMex a Geological Information platform

Data display, content, visualizing, consulting options, and downloading of geological data.

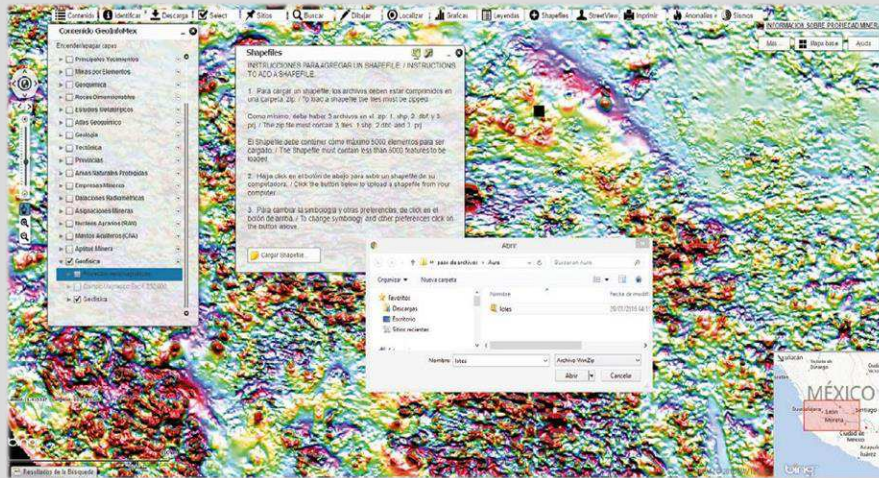


Downloaded report, Pdf file

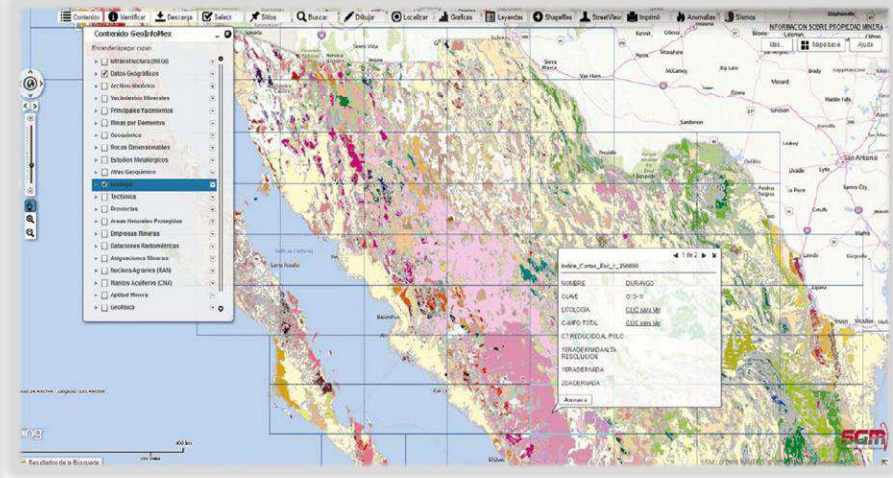


Selected area and downloadable map

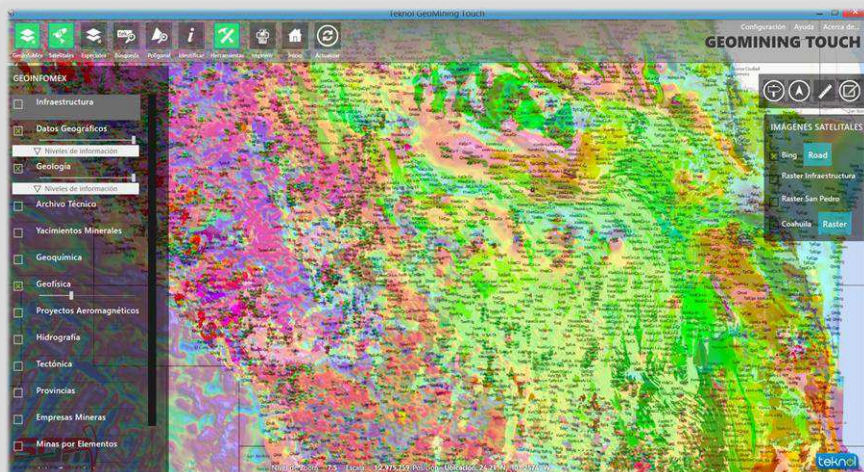
GeoInfoMex a Geological Information platform



Data downloading



Information displayed at different scales

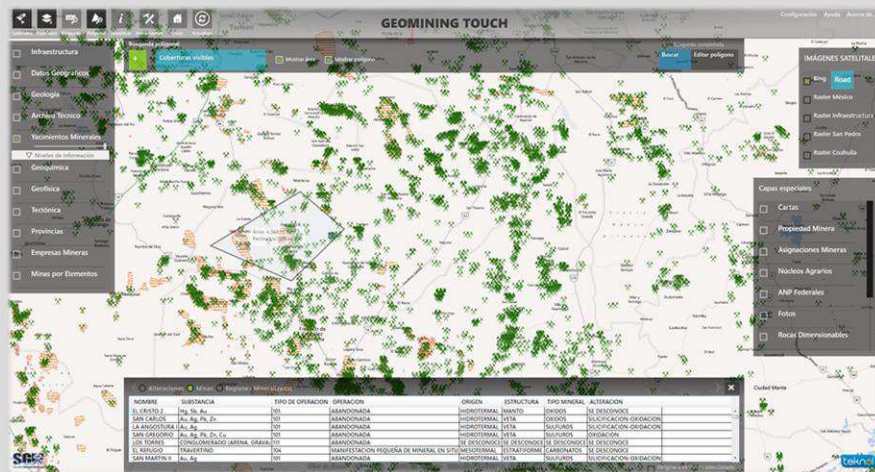


Displayed in multiple layers with transparency options

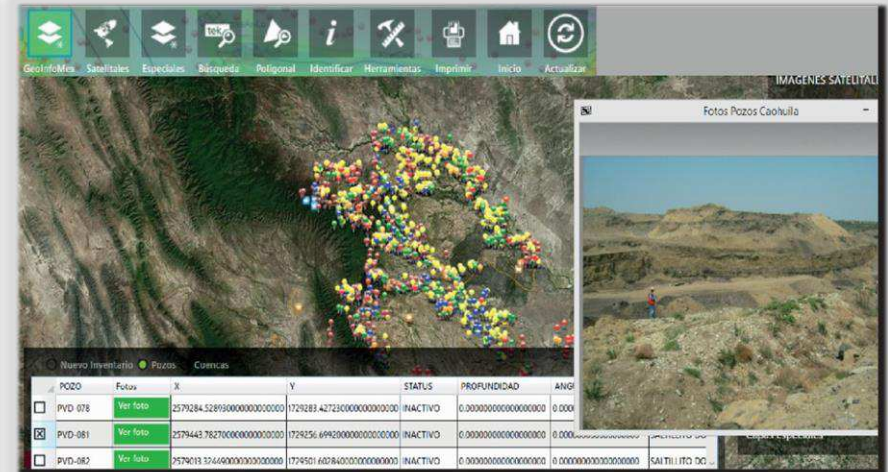


Data display including database

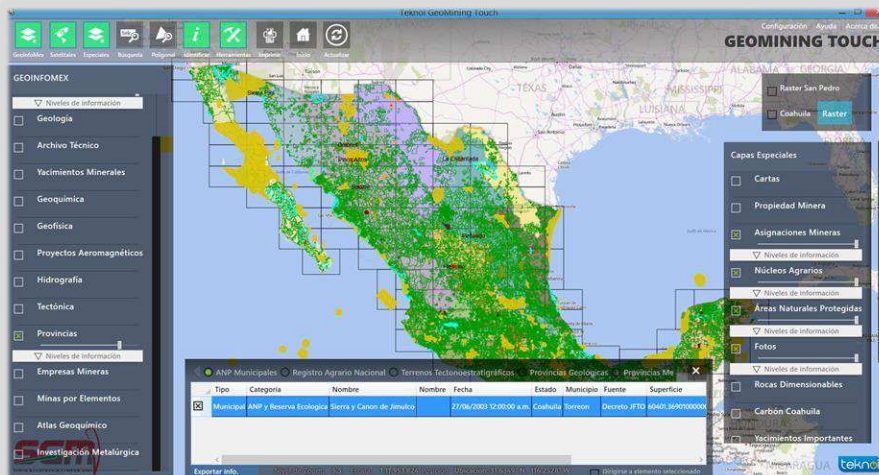
GeoInfoMex a Geological Information platform



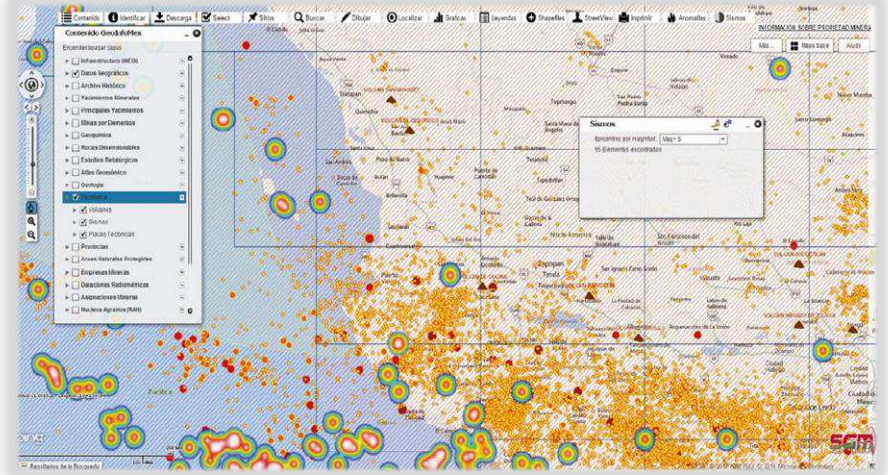
Mines location selected by points or polygons



Google street-view options



Data shared among other federal institutions



Information for sensitizing, easy consulting and quick reference for decision making

www.gob.mx/sgm

Natalia Amezcua
natalia.amezcua@sgm.gob.mx
Coordinator, Deputy Direction of Geology, Geology Directorate,
Mexican Geological Survey