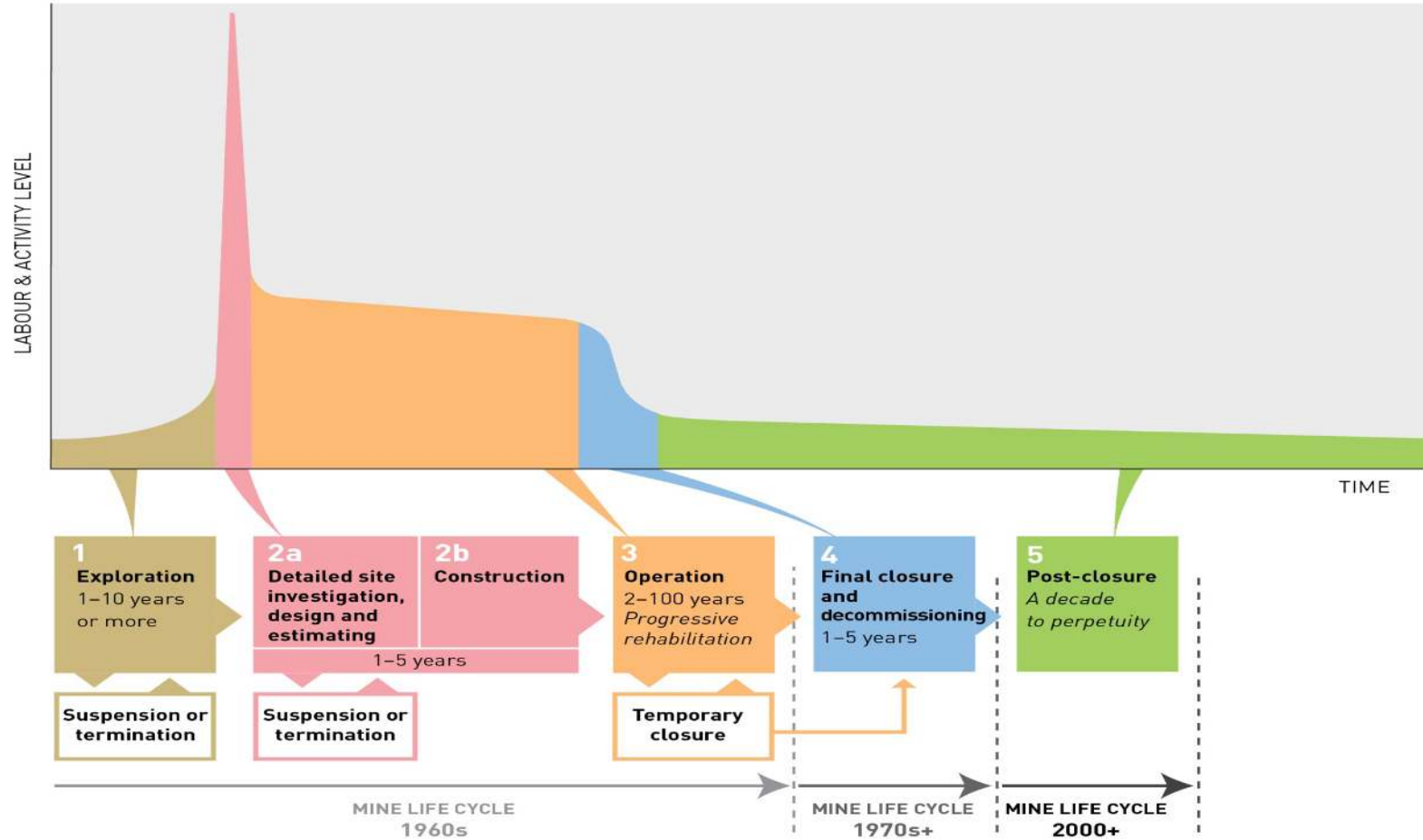


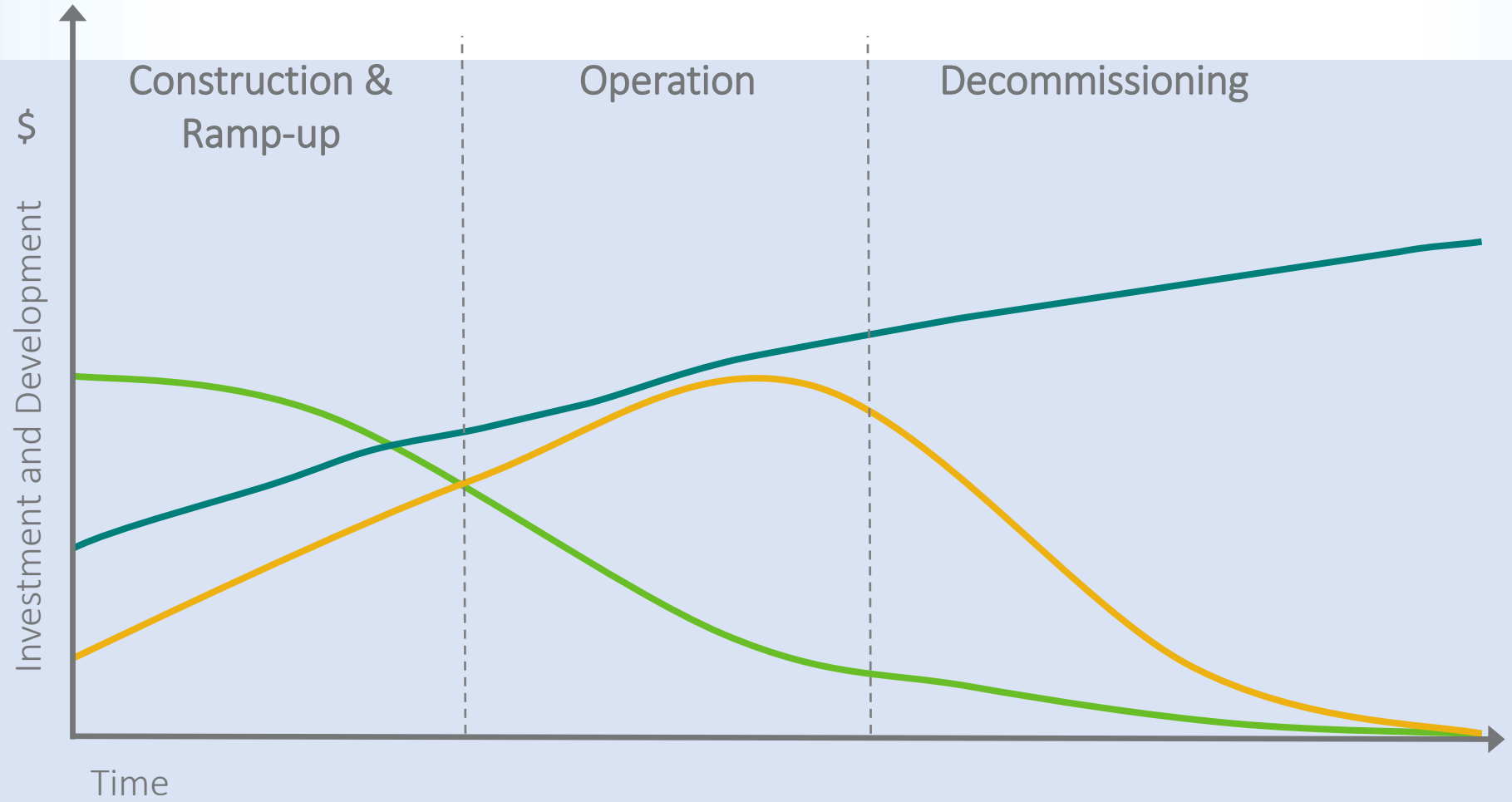


Proactiva: www.proactivaresults.com

Mining Cycle and timeliness of Macro-coordination

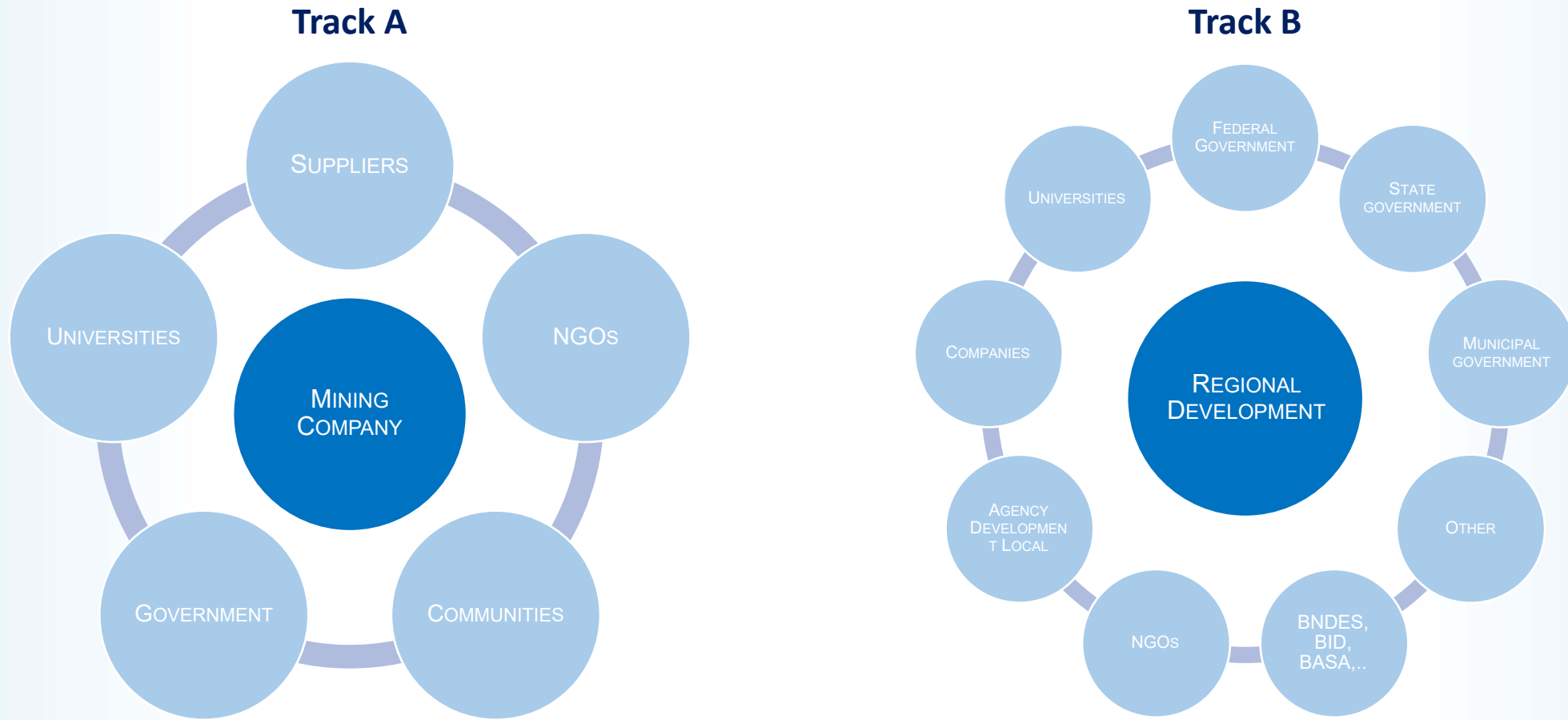


Challenges & Opportunities

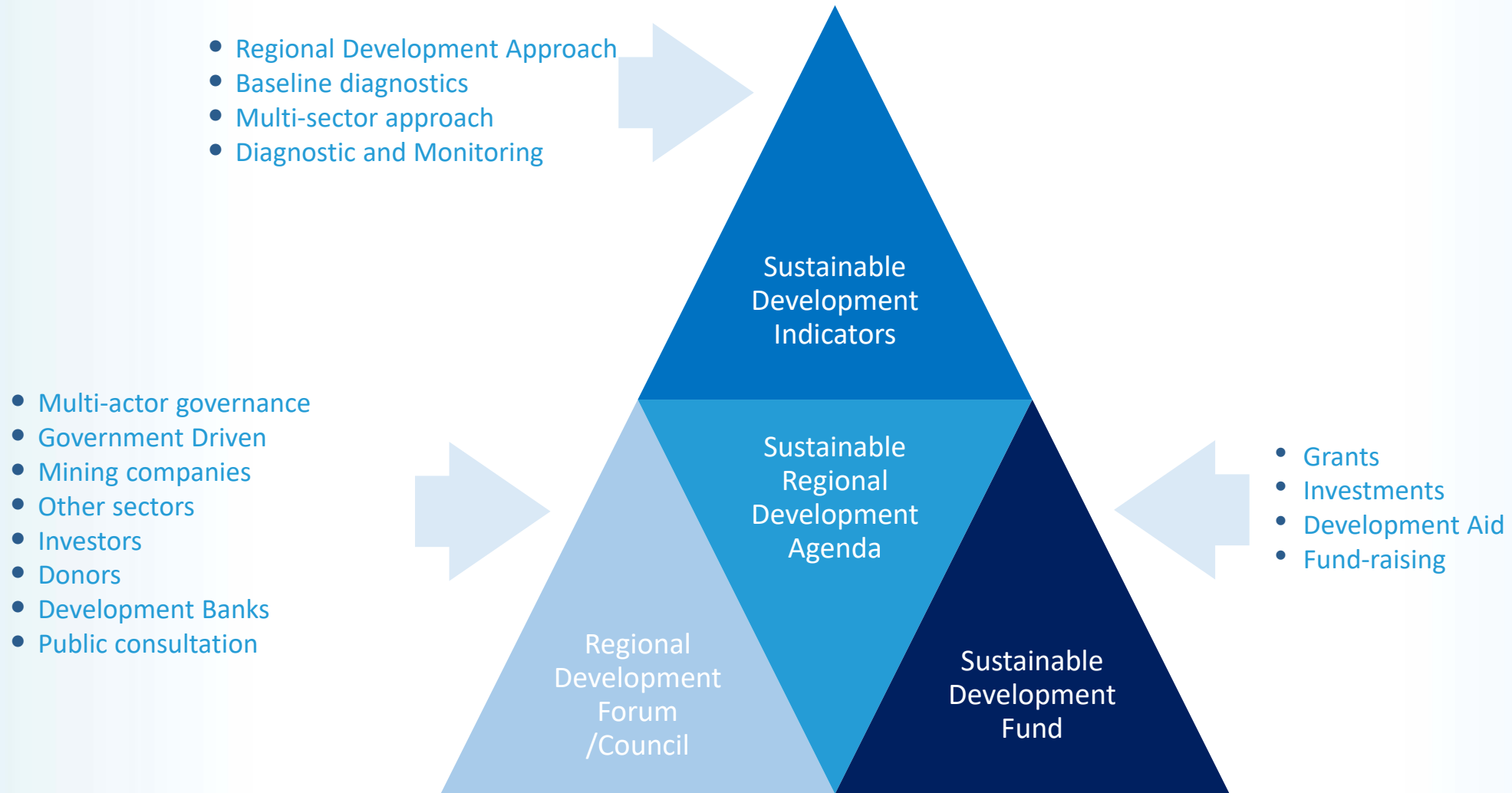


- Social Investment from Mining Company
- Tax Collection by Government
- Integrated Plan of Investment

Multi-stakeholder model for Regional Development

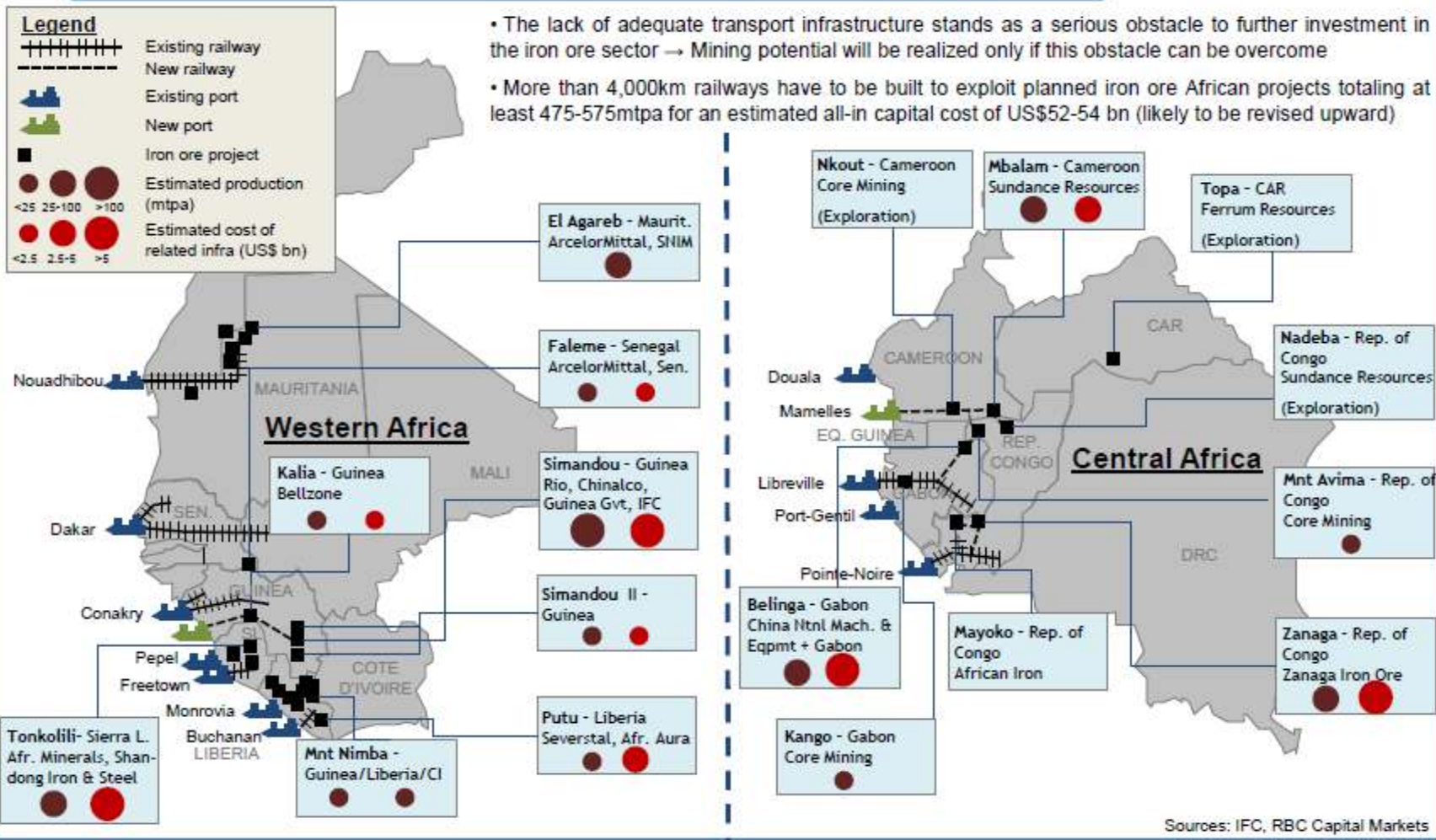


Idea of a Model for Regional Development



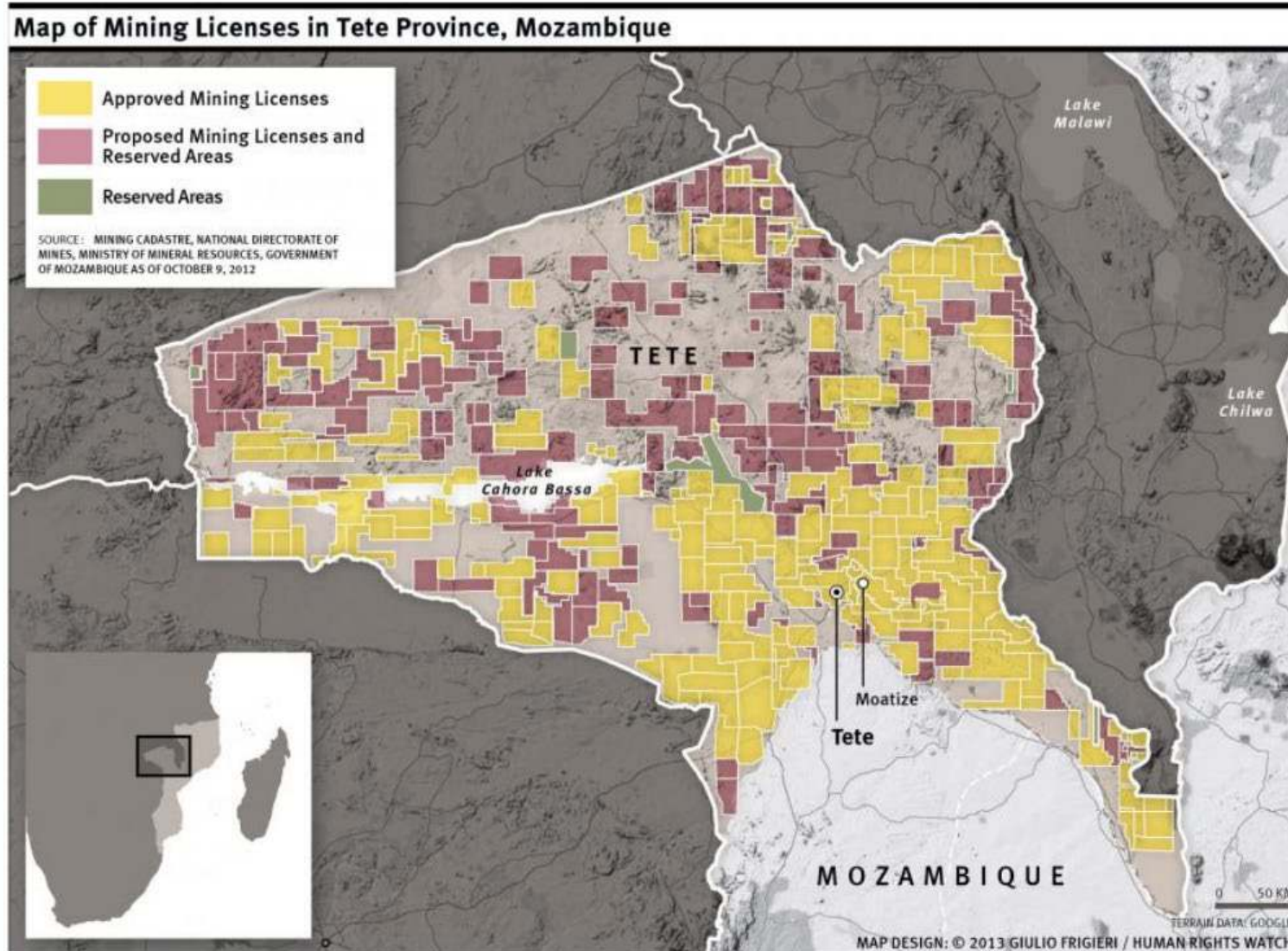
The Case of West and Central Africa Iron Ore

This should unlock the potential of more remote mining fields...if they can be brought to market



- The lack of adequate transport infrastructure stands as a serious obstacle to further investment in the iron ore sector → Mining potential will be realized only if this obstacle can be overcome
- More than 4,000km railways have to be built to exploit planned iron ore African projects totaling at least 475-575mtpa for an estimated all-in capital cost of US\$52-54 bn (likely to be revised upward)

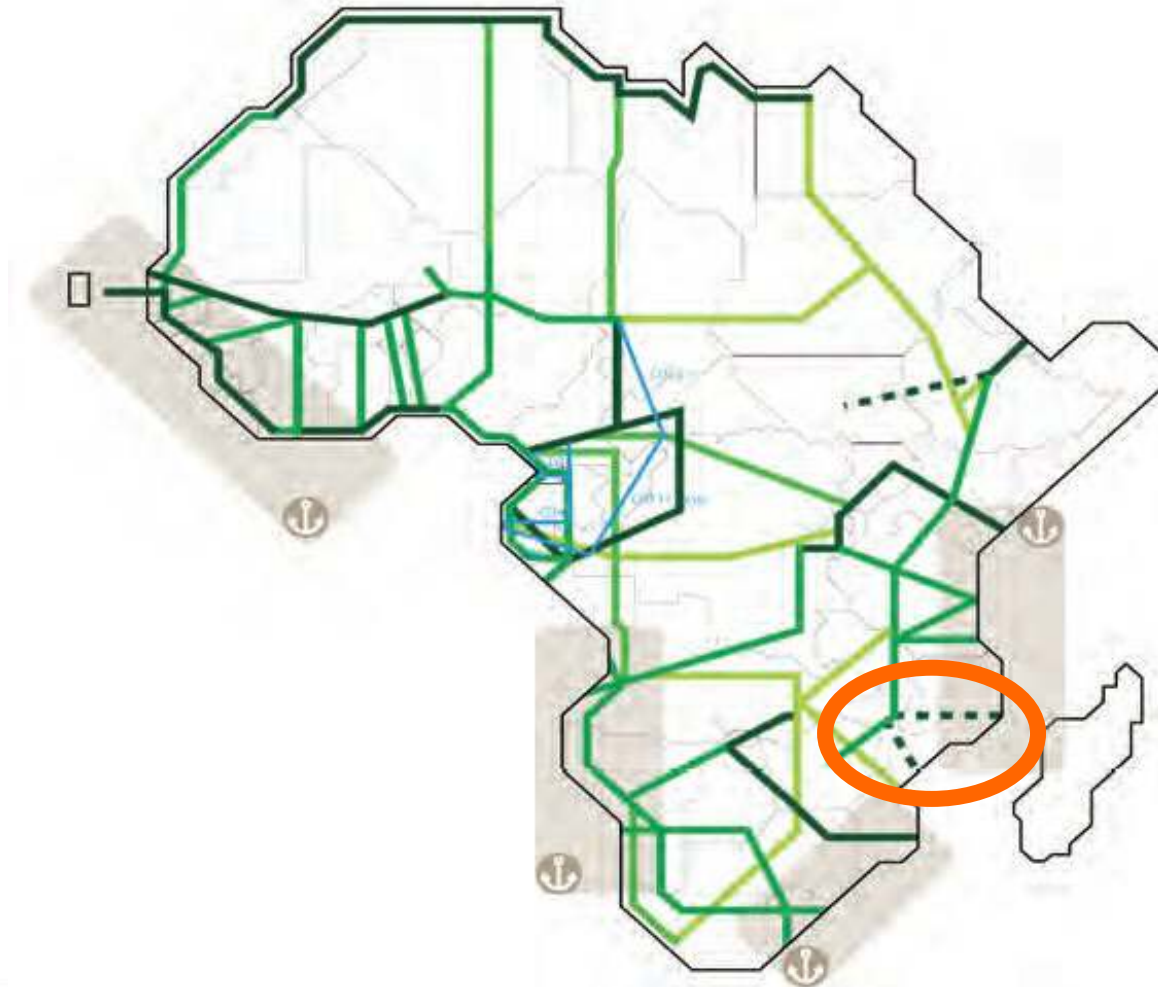
Mozambique: Tete Province



This map is based on data from the Mozambican government's mining registry in October 2012 and does not reflect any new, expired, or canceled licenses since then. There may be additional licenses not reflected in this map due to some gaps in the obtained data. Not all exploration activity leads to the discovery of commercially viable deposits and to the development of mines, so this map does not imply that all of the shaded areas will eventually be covered by mining operations. But the crowded number of licenses contribute to problems including resettlement of local communities, water resource management, and conflicts over claims to land use.

PIDA Transport networks – 2020 & 2040

Corridor 2020 Corridor 2040 TAH 2020 TAH 2040
Hub Port Programmes ECCAS Connectivity



Source:
PIDA Africa Infrastructure Synthesis

Brazil: State of Pará



State Socioeconomic Policy (2018):

- Preliminary inception of the idea
- State Council
- Regional Socio-Environmental-Economic Development
- Coordination of public and private investments: infrastructure, social, employment, wealth generation, supply chains