



Government  
of Canada

Gouvernement  
du Canada

# The Future of Mining Policy in Canada

2018 IGF Annual General Meeting  
Modern Mining Law and Policy: Global Trends  
October 18, 2018





Hilary Morgan, Director, International Affairs and Trade  
Natural Resources Canada

Canada





# Minerals and Metals are Unlocking Clean Growth and Inclusive Prosperity

	<b>GDP</b>	<b>\$97 BILLION</b> <i>Annually</i>
	<b>JOBS</b>	<b>634,000</b> <i>Direct &amp; Indirect</i>
	<b>INVESTMENT</b>	<b>\$12 BILLION</b> <i>2017</i>
	<b>TRADE</b>	<b>19.4%</b> <i>of Domestic Exports</i>

## BENEFITS TO CANADIANS

Innovation that is building  
the low-carbon economy

Good-paying, middle class  
jobs across Canada

Strengthened communities through  
investment and opportunity





# Canadian Policy is Collaborative, Respecting Clear Responsibilities

## FEDERAL

Fiscal and monetary policy  
Federal lands  
National geoscience  
International trade and investment  
Navigable waters management

## SHARED

Economic development  
Environmental protection  
Innovation  
Infrastructure  
Health and safety  
Indigenous relations  
Research and development  
Responsible business conduct  
Sales, corporate, and income taxes  
Land access

## PROVINCIAL & TERRITORIAL

Resource ownership and management  
Jurisdictional geoscience  
Resource exploration and development guidelines  
Operational licensing, permitting, and monitoring  
Mining taxes and royalties





# Canada is Modernizing it's Mining Policies



## Guided by Public Consultations

- Provincial, territorial, and municipal governments
- Industry
- Academia
- Indigenous Peoples
- Global partners
- Canadians





# The Proposed New Impact Assessment Act

## CURRENT REGIME

No early planning and engagement phase

Lack of flexibility to harmonize the review

Indigenous knowledge not consistently considered

Often lengthy, legislated timelines

Focus on minimizing environmental effects

Indigenous engagement driven by legal imperative

Strict test determines participation in process



## PROPOSED REGIME

Mandatory early planning and engagement

Focus on enhanced cooperation and collaboration

Guided by science and Indigenous knowledge

Shorter, legislated timelines

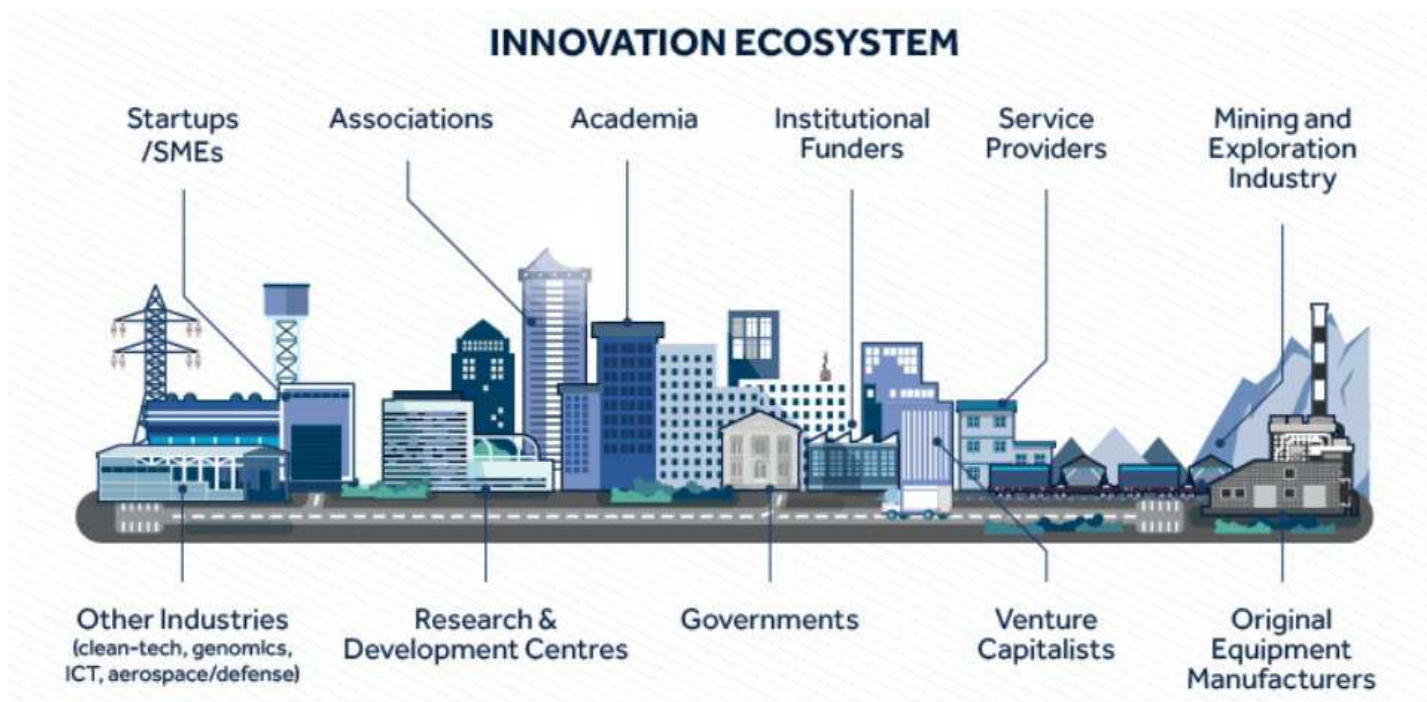
Broadened scope of impacts beyond environment

Inclusive engagement aimed at securing consent

Any member of the public can participate



# Incentivizing Industry to Drive Innovation: Impact Canada



## Crush It' Challenge

A competition to develop new innovative solutions to reduce the energy intensity, cost, and environmental impacts of comminution-based mineral processing

**Mining innovations will help  
Canada meet its climate  
change commitments**

By Norbert Kaiser - Own work, CC BY-SA 3.0,  
<https://commons.wikimedia.org/w/index.php?curid=19414313>

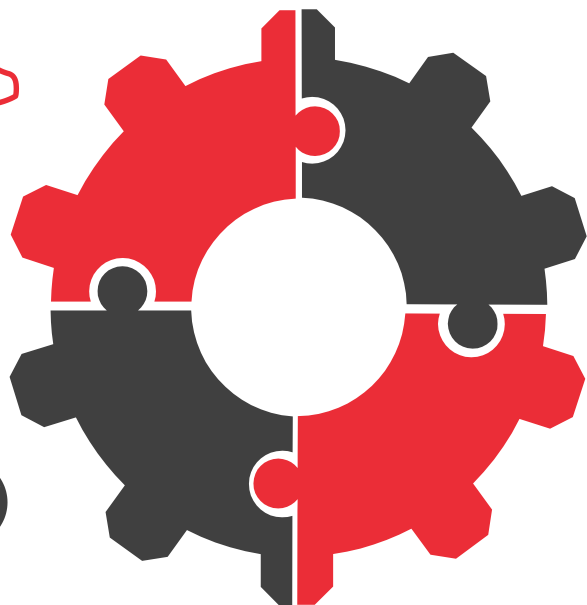


# Global Leadership on Responsible Business Conduct

**Provide  
Advice and  
Guidance**



**Strengthen  
Global  
Governance**



**Foster  
Networks  
& Partnerships**



**Assist  
Dispute  
Resolution**

Canadian firms are setting the standard with voluntary initiatives that ensure mining benefits the communities in which they operate







# A Vision for the Future: The Canadian Minerals and Metals Plan

Canada is committed to continued leadership in minerals innovation, sustainable mining, and ensuring that resource extraction benefits all our communities



*The Canadian Minerals and Metals Plan will strengthen Canada's position as a global mining leader*





Canada 