



# ASM interface with large-scale mining

David Noko  
18 October 2017

# The AngloGold Ashanti ASM landscape



## ARTISANAL AND SMALL-SCALE MINING

- Colombia
- Tanzania

## ILLEGAL MINING

- Colombia
- Tanzania
- Guinea
- Mali
- Ghana
- South Africa

## ILLEGAL MINING - CRIMINAL

- Colombia

# Navigating regulatory complexity

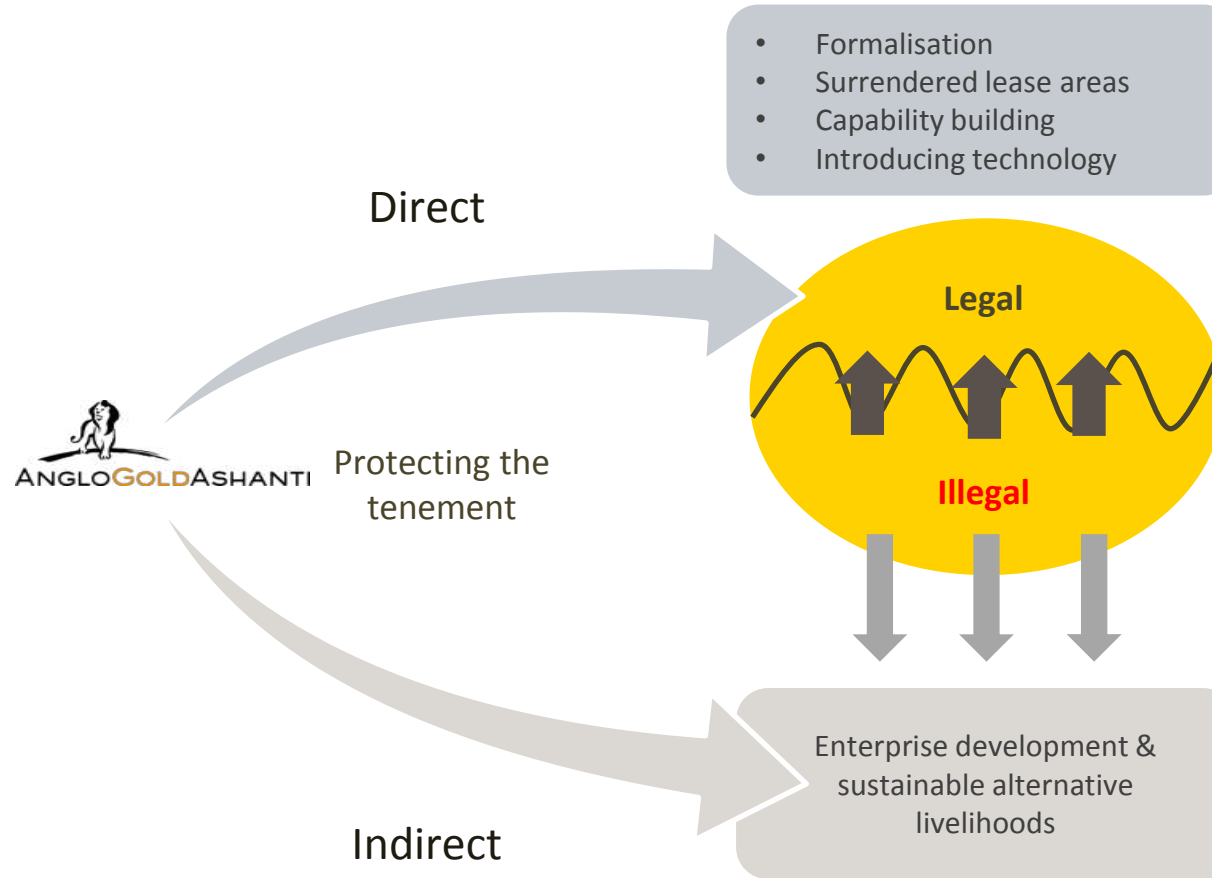
## ASM – COUNTRY REGULATORY PERSPECTIVES

Issue	Tanzania	Ghana	Mali	Guinea	South Africa	DRC	Colombia	Brazil
<b>Is ASM recognised in the law?</b>	Yes	Yes	Yes	Yes	Yes	Yes	Yes	Yes
<b>Areas where ASM rights/ permits can be issued?</b>	Open access to free areas	Open access to free areas	Designated zones for Artisanal & open access to free areas for Small-scale	Designated zones for Artisanal & open access to free areas for Small-scale	Open access to free areas No overlap permitted	Designated zones for Artisanal & open access to free areas for Small-scale	Clarity required	Clarity required
<b>Is overlap of right with LSM rights permissible?</b>	No - for same minerals in LSM area	No - for same minerals in LSM area	No - for same minerals in LSM area	No – for same minerals in LSM area	No - for same minerals in LSM area	No - AM is only permitted in designated zones. No - for SSM with same minerals in LSM area	Clarity required	Clarity required
<b>Is tributing / leasing to ASM allowed?</b>	No special mention, but appears not to be excluded	No special mention, but appears not to be excluded	Yes - Tributing by LSM right holder with government permission	Yes - Tributing by LSM right holder with government permission	Yes - Tributing by LSM right holder with government permission	No - for AM Yes – for SSM with government permission	Yes - Tributing by LSM right holder with permission of government	Yes - Tributing by LSM right holder with permission of government
<b>Is Government institutional support provided for ASM?</b>	Yes	Yes	Minimal	Minimal	Yes	Limited	Nascent	Yes

# Our strategic approach – “Co-Existence”

## Guiding Principles

- Formalising, regulating and integrating ASM
- Supportive policy frameworks and implementing International & Regional instruments
- Geological research identifying zones and deposits for ASM
- Promotion and transfer of knowledge, skills & technology
- Targeted support to potentially viable ASM operations
- Promoting downstream value-addition for ASM
- Promoting youth engagement and entrepreneurial activity
- Strengthening ASM associations

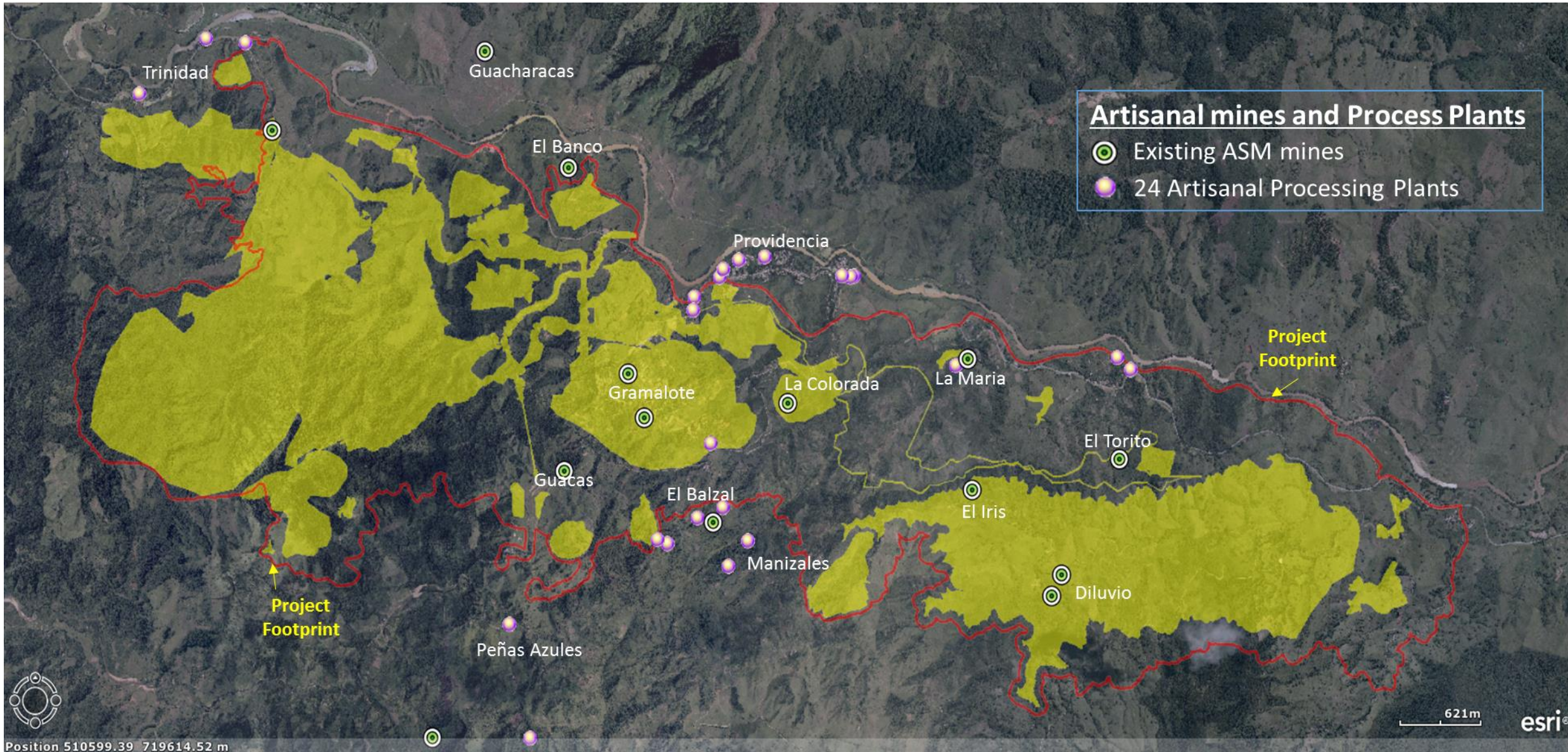


## Strategic levers

- Integration
- Inclusivity
- Demonstrating impact







# Colombia Gramalote Project – mapping ASM activities

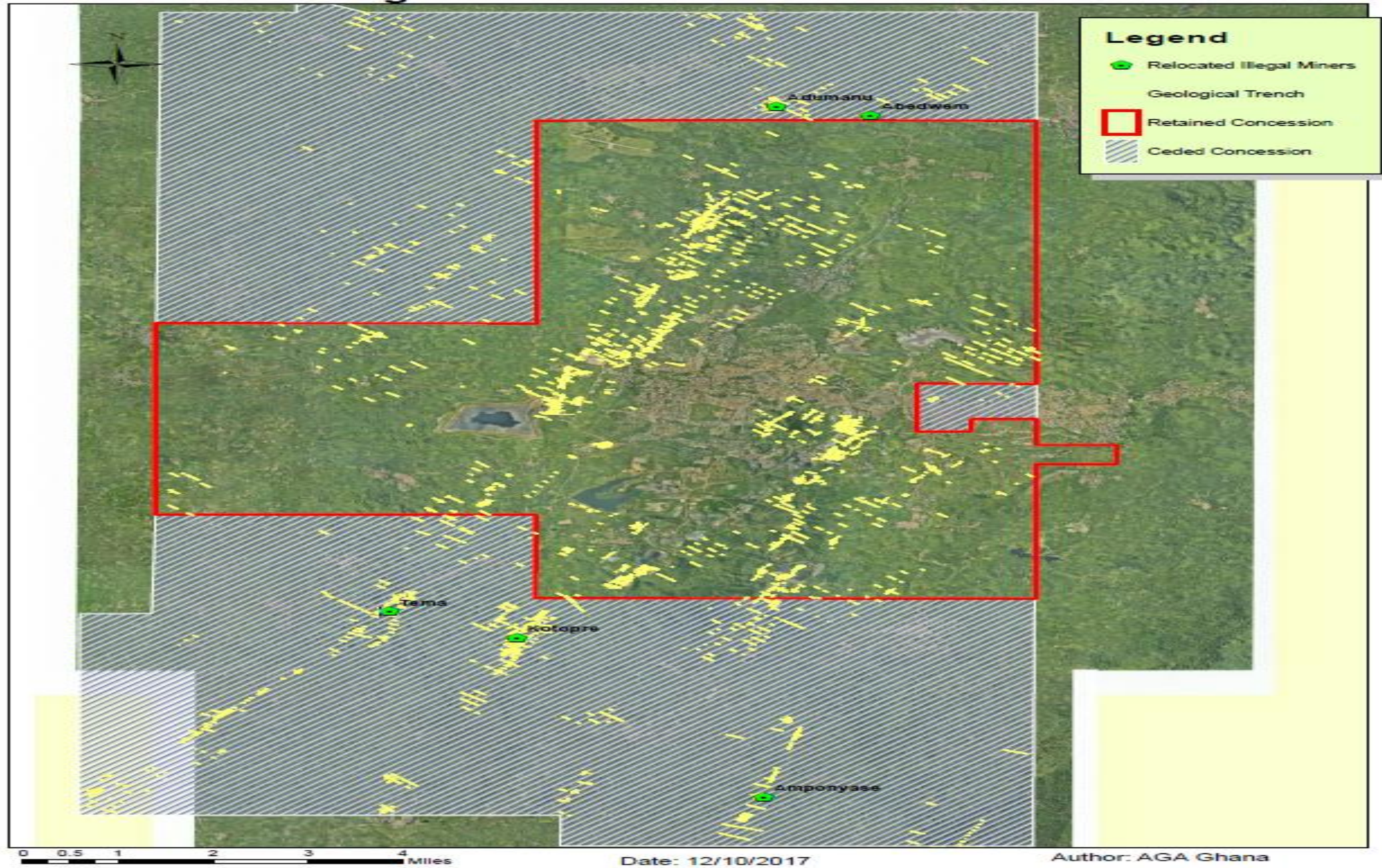




# Colombia – establishing a partnership with USAID (Oro Legal Program)

High level activity	Indicative timeframe (total 18 months)		Team
<b>1</b> Diagnosis	Social and technical assessment of business viability / stage gate 	<div style="border: 2px solid red; padding: 5px;">             In progress - consultation with ASM – led by Govt.           </div>	Business team (AGA, USAID, Authorities)
<b>2</b> Permitting	Development of ASM formalisation setup, submissions and approvals 		Business team
<b>3</b> Implementation	Construction, mine development & production 		Geology; mining engineering; HSE; social science; finance
<b>4</b> Support	Ongoing support to enable sustainability and success 		Geology; mining engineering; HSE; social science; finance

# Ghana - Obuasi Mine – Relinquish & Relocate Map



# Ghana - Obuasi Mine - formalisation process

- Years of illegal mining on our concession - invasion of the mine in 2016
- Engagement with Minerals Commission (MINCOM) and community leadership to find solution
- ASM formalisation process initiated which included the following:
  - Consultation on options with all relevant stakeholders – driven by MINCOM
  - Ceding of 60% of concession back to Government
  - Identification of suitable land (outside concession) for relocation
  - Technical support provided – geology, accessibility etc.
  - MINCOM relocation program – inventory and registration process
  - +- 10 000 illegal miners relocated
  - MINCOM responsible for ESH issues - AGA provide support where required
- Process completed successfully by end of 2016 - no major problems to date
- Government initiative to clean up ASM industry could have an impact on the status quo



# Concluding remarks

- Our interface with ASM is important and we are actively working towards co-existence
- Our strategic approach incorporates design and execution
- Collaboration is a critical prerequisite for success
- We will continue to navigate and shape the resolution of constraints such as regulatory frameworks
- Funding must be mobilised to accelerate progress
- Criminal activities and infiltration of ASM must be vigorously addressed

Thank you