



The ASM in Mauritania

Brief description on the experience of Mauritania with ASM

Presented by:

Ahmed TALEB MOHAMED

Technical Adviser in charge of mines

Overview

Mauritania

Over a million sq km for about 4 million people;

The pillars of the economy are

- Fishing
- Mining
- Livestock



Mauritania with ASM

Facts

Barriers for artisanal mining:

- ✓ No tradition for artisanal mining
- ✓ Aride climate
- ✓ Lack of know how
- ✓ Insufficient regulation

CHRONOLOGY

April 2016

THE GOLD RUSH

- Use of metal detectors
- More than 10,000 people rush into an area close to a gold mine
- Government adopted a new regulation (Decree of 22nd April 2016) and a licensing approach
- By the 30 April : 5606 authorizations were delivered



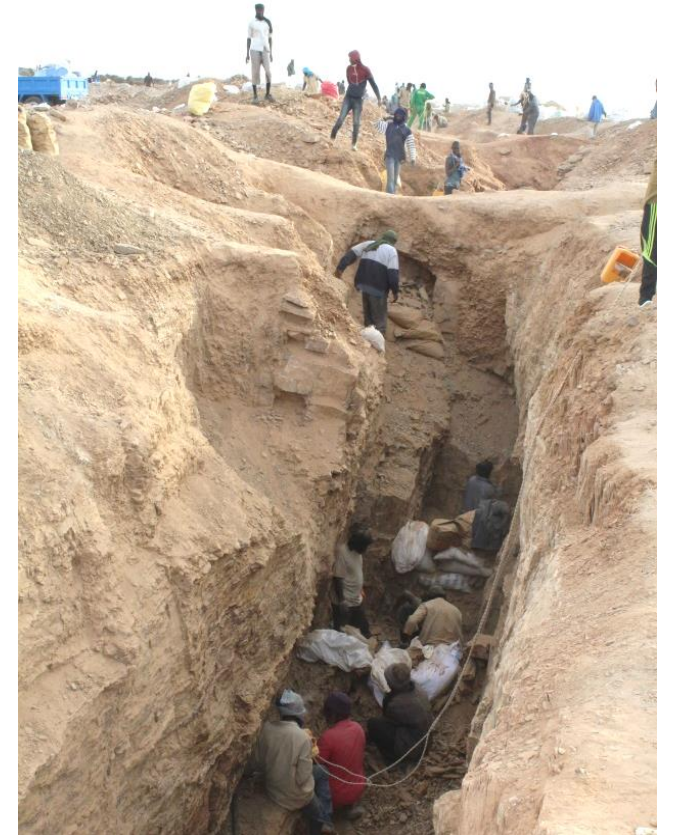
CHRONOLOGY

June 2016

START OF MINING OPERATIONS

Gold is extracted exclusively from quartz veins;

Material is transported initially to the capital Nouakchott then to the neighboring village : CHAMI;



CHRONOLOGY

September 2016

Mining services in Chami

Miners started using dry process to separate gold from host rock;

Introduction of wet process;

Mercury is commonly used

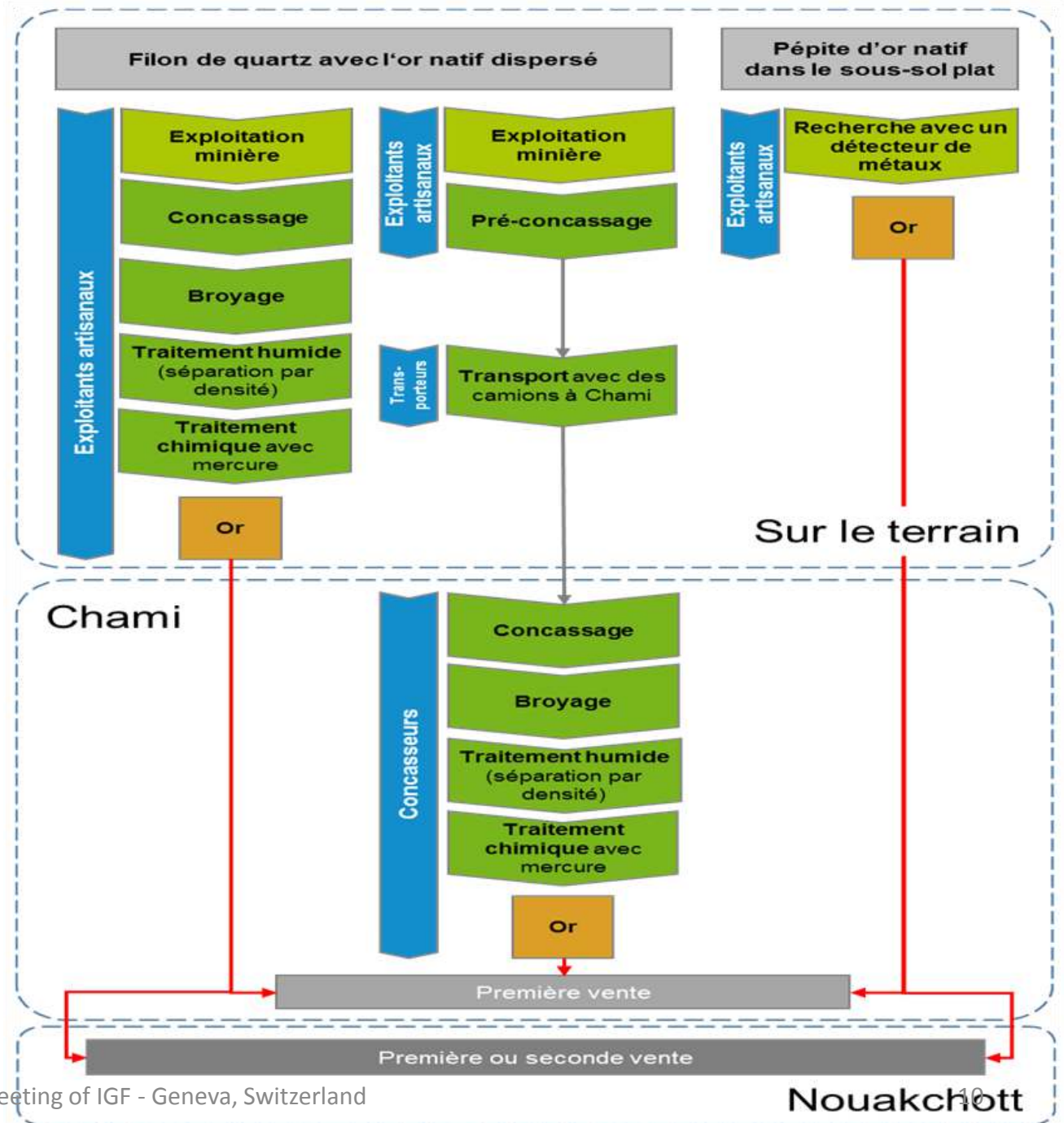


THE VALUE CHAIN

Miners are organized ;

Treatment is done in a single place:
CHAMI ;

Surface gold started to be a minor
activity

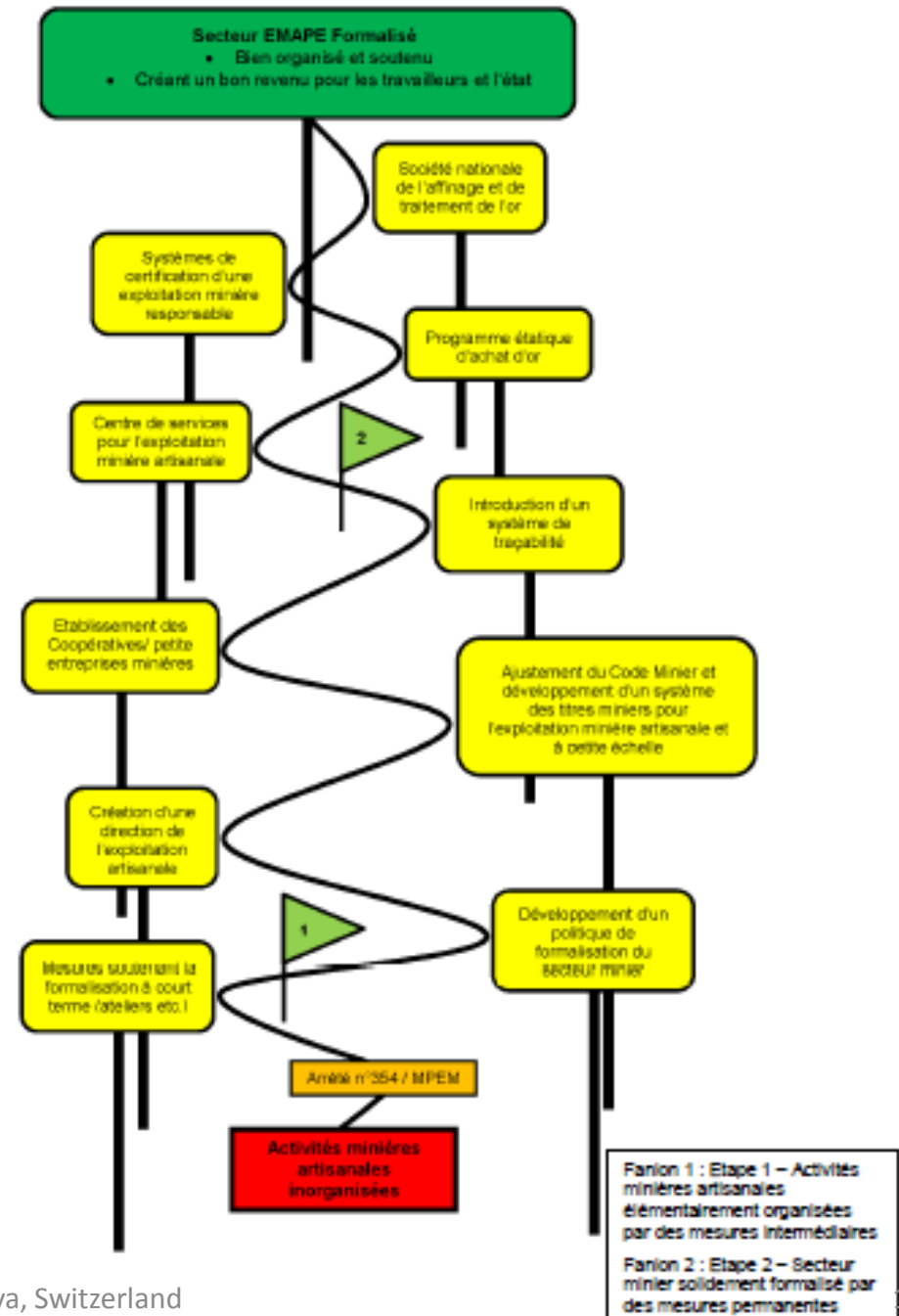


STUDYING THE PHENOMENON

- Different missions from the Department of mines: Mali, Sudan...
- Conduct of baseline study by german ProjektConsult ;
- Meeting miners on a regular base ;
- Several workshops to inform and sensitize ;



ROAD MAP ASM



CHRONOLOGY

January 2017

intensification of mechanization and processing units

- Census of treatment units
- Construction of Chami Center

Owners	Number of Mills	Number of primary crushers	Number of secondary crushers	Large crushers
547	902	74	644	15

Construction of CHAMI Center for mining services



Construction of CHAMI Center for mining services



CHRONOLOGY

Ongoing actions

INTRODUCTION OF NEW REGULATION

The emergence of artisanal activity, with its significant economic impact on related subjects, has significant economic and environmental risks that can be mitigated by a shift in the sector towards sustainability and diversification.



SMALL SCALE MINING

The decree for the small scale mining sets out the conditions and characteristics of the small mine ;

Area of 2 sq km,

Number of employees under 30

Depth limited to 150m

ARTISANAL MINING

New regulation

Three texts have been prepared to address the different areas of artisanal mining

- 1- Ministerial Decree on the organization of the profession of artisanal miner ;
- 2- Ministerial Decree defining corridors of artisanal mining activity ;
- 3- Joint Order on the Marketing and Export of Gold



IGF

INTERGOVERNMENTAL FORUM
on Mining, Minerals, Metals and
Sustainable Development

THANK YOU FOR YOUR ATTENTION